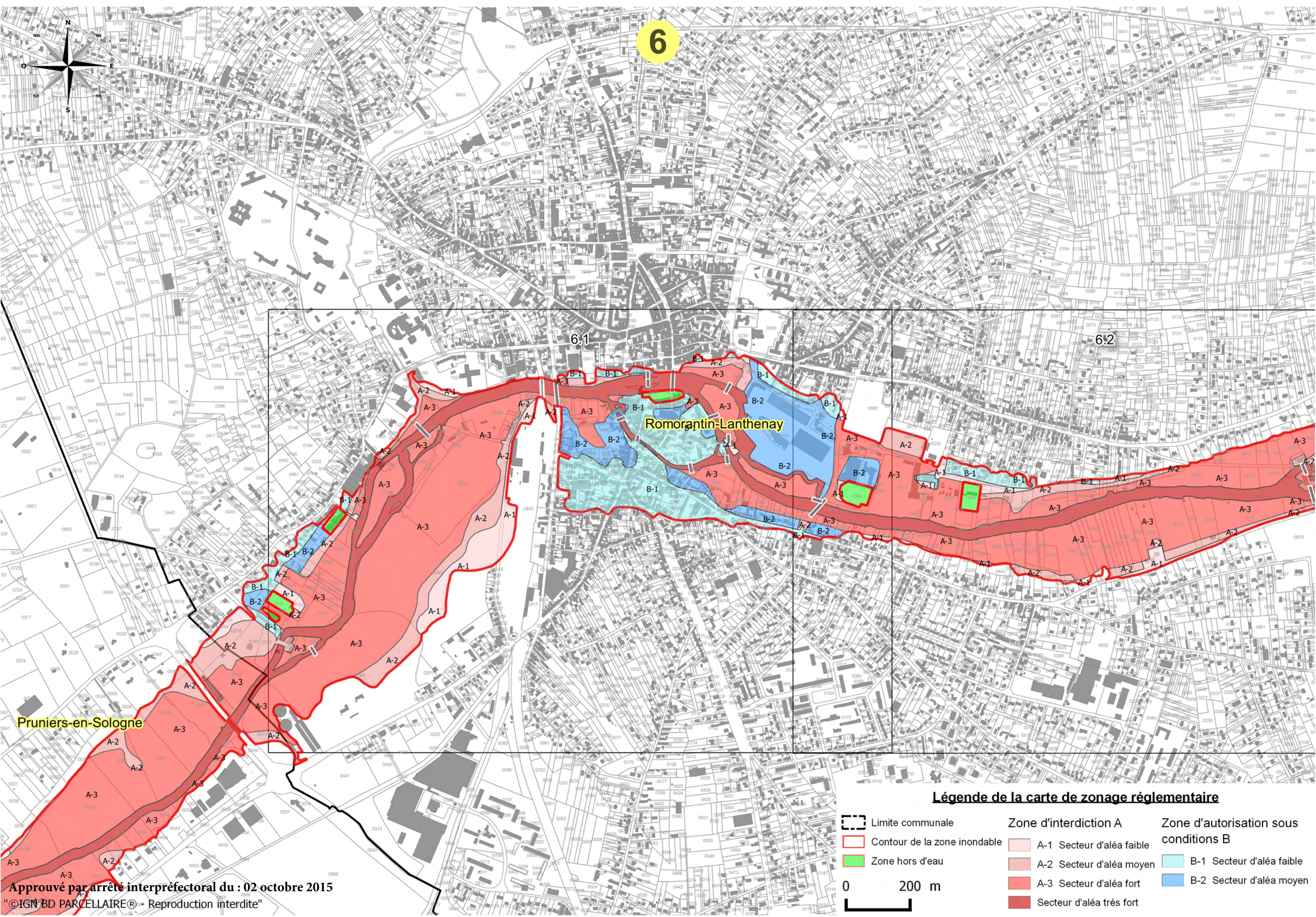


6



Pruniers-en-Sologne

Romorantin-Lanthenay

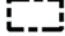








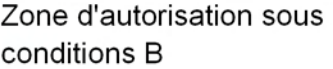
6.1

6.2

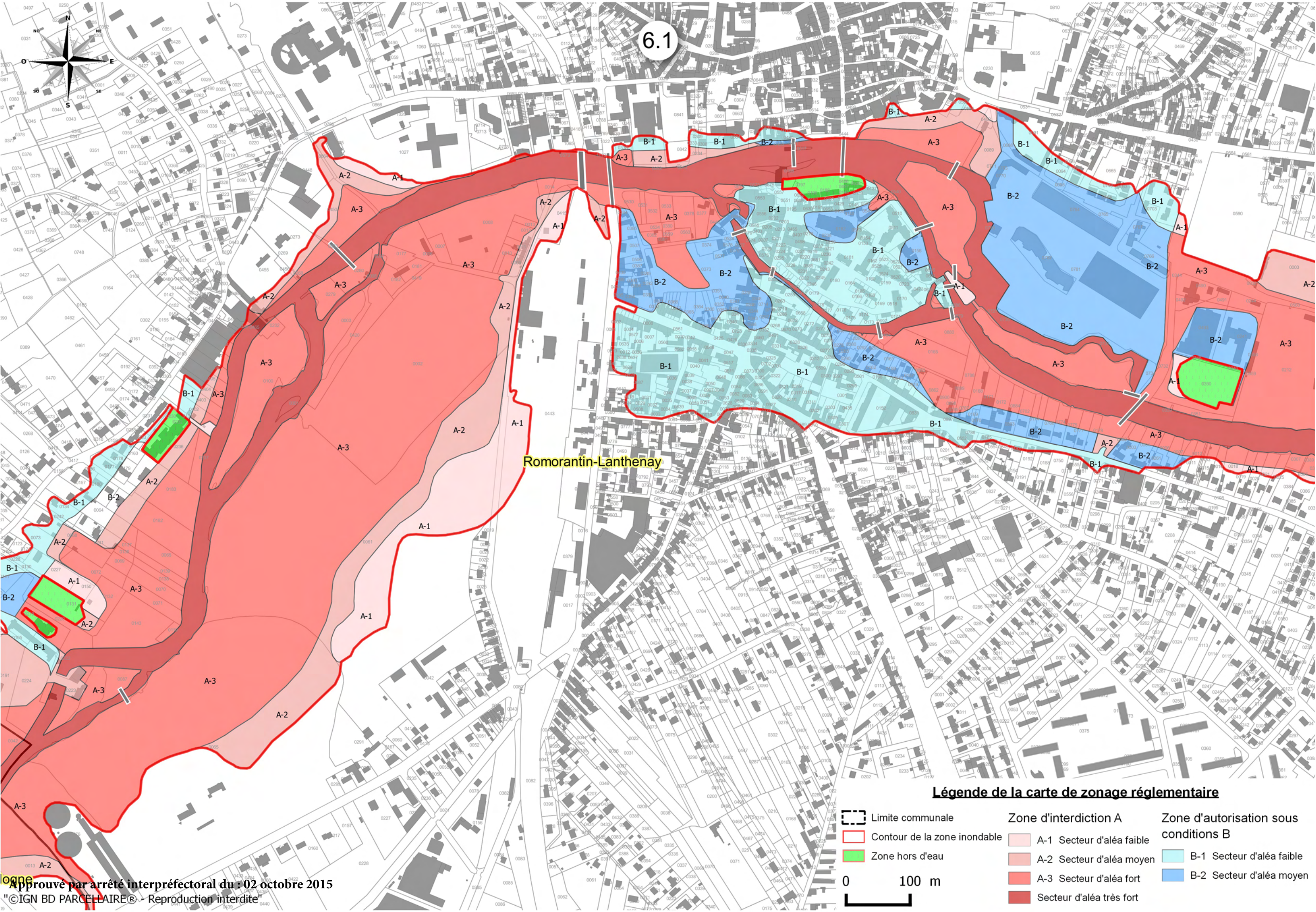
Approuvé par arrêté interpréfectoral du : 02 octobre 2015

©IGN BD PARCELLAIRE® - Reproduction interdite

Légende de la carte de zonage réglementaire

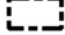








-  Limite communale
-  Contour de la zone inondable
-  Zone hors d'eau
-  A-1 Secteur d'aléa faible
-  A-2 Secteur d'aléa moyen
-  A-3 Secteur d'aléa fort
-  Secteur d'aléa très fort
-  B-1 Secteur d'aléa faible
-  B-2 Secteur d'aléa moyen
-  Zone d'autorisation sous conditions B

0 200 m

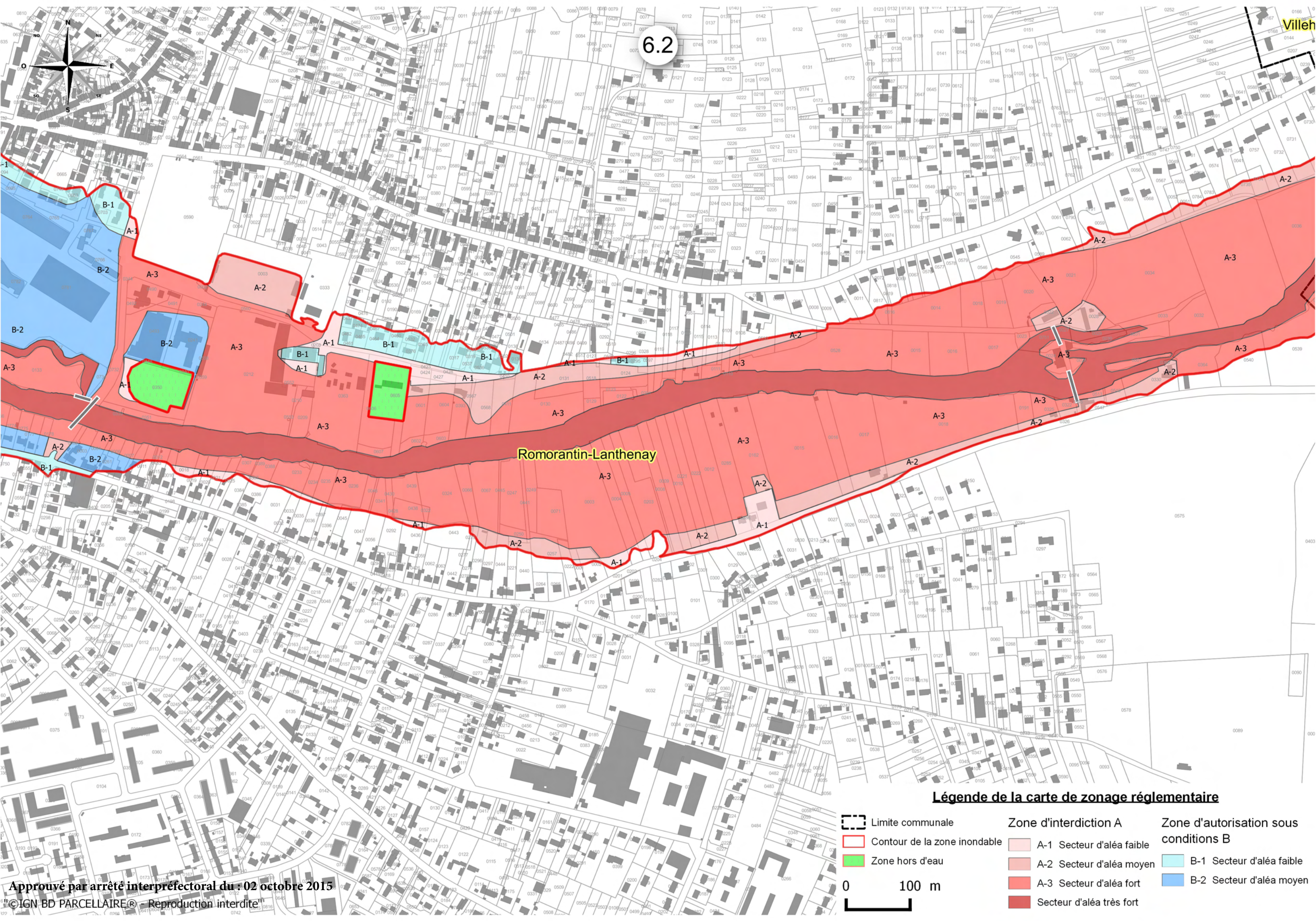


Romorantin-Lanthenay

Légende de la carte de zonage réglementaire










-  Limite communale
-  Contour de la zone inondable
-  Zone hors d'eau
-  A-1 Secteur d'aléa faible
-  A-2 Secteur d'aléa moyen
-  A-3 Secteur d'aléa fort
-  Secteur d'aléa très fort
- Zone d'interdiction A**
- Zone d'autorisation sous conditions B**
-  B-1 Secteur d'aléa faible
-  B-2 Secteur d'aléa moyen

0 100 m

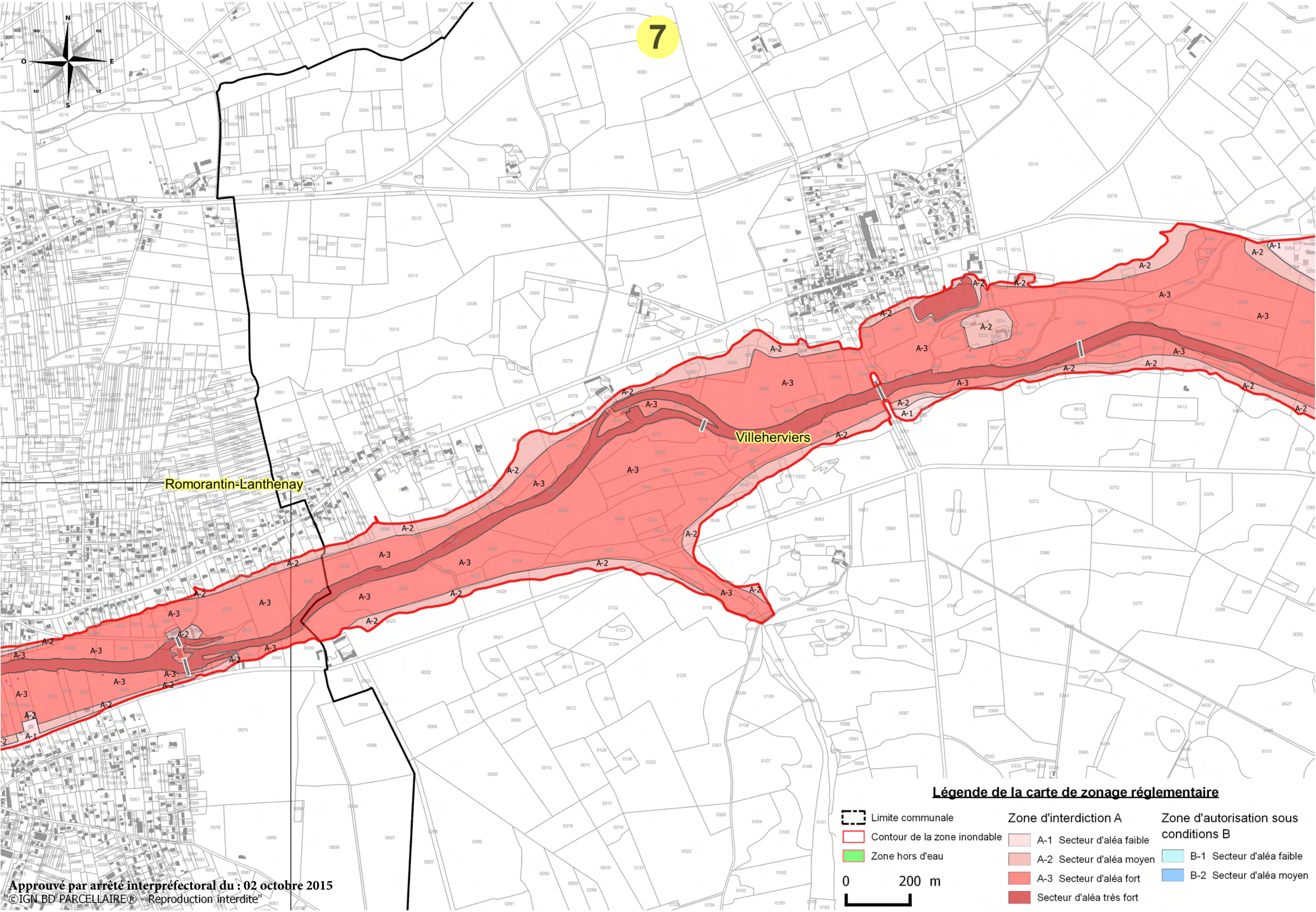


Romorantin-Lanthenay

Légende de la carte de zonage réglementaire

-  Limite communale
-  Contour de la zone inondable
-  Zone hors d'eau
-  A-1 Secteur d'aléa faible
-  A-2 Secteur d'aléa moyen
-  A-3 Secteur d'aléa fort
-  Secteur d'aléa très fort
-  B-1 Secteur d'aléa faible
-  B-2 Secteur d'aléa moyen

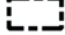








7



Romorantin-Lanthenay

Villeherviers

Légende de la carte de zonage réglementaire

-  Limite communale
-  Contour de la zone inondable
-  Zone hors d'eau
-  A-1 Secteur d'aléa faible
-  A-2 Secteur d'aléa moyen
-  A-3 Secteur d'aléa fort
-  Secteur d'aléa très fort
-  B-1 Secteur d'aléa faible
-  B-2 Secteur d'aléa moyen



Approuvé par arrêté inter préfectoral du : 02 octobre 2015
 ©IGN BD PARCELLAIRE® - Reproduction interdite